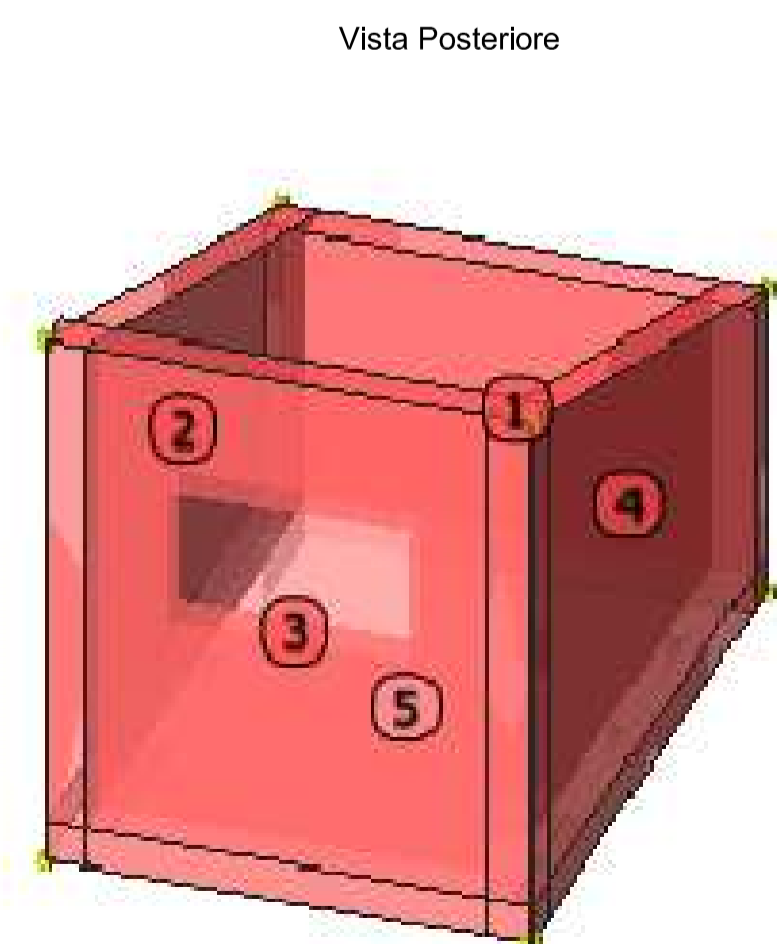
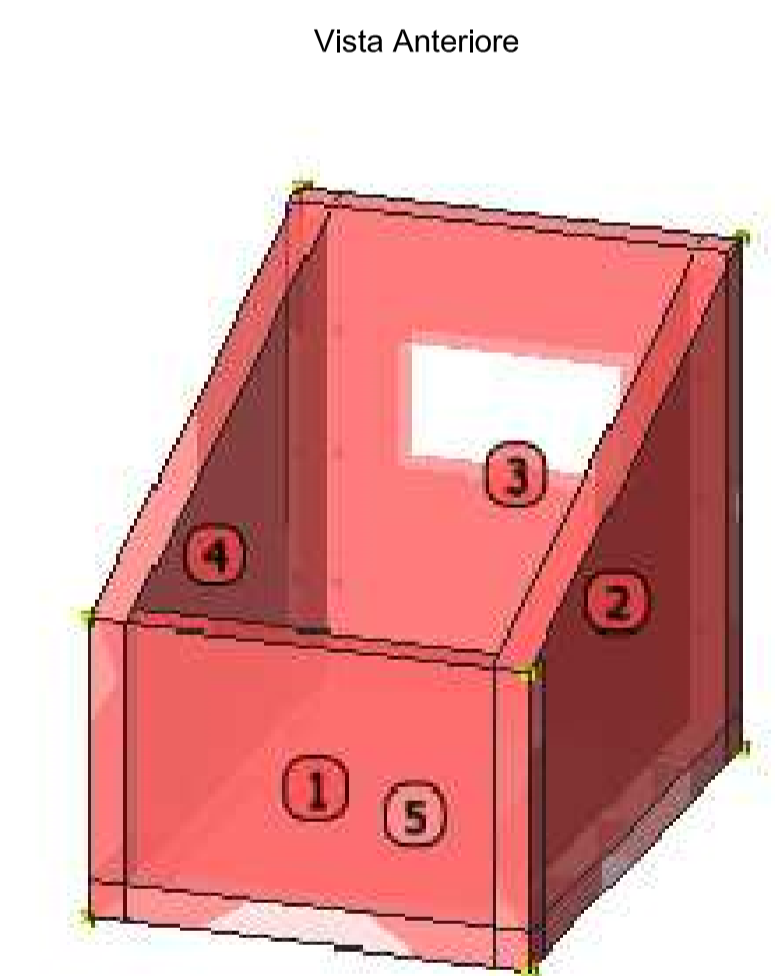
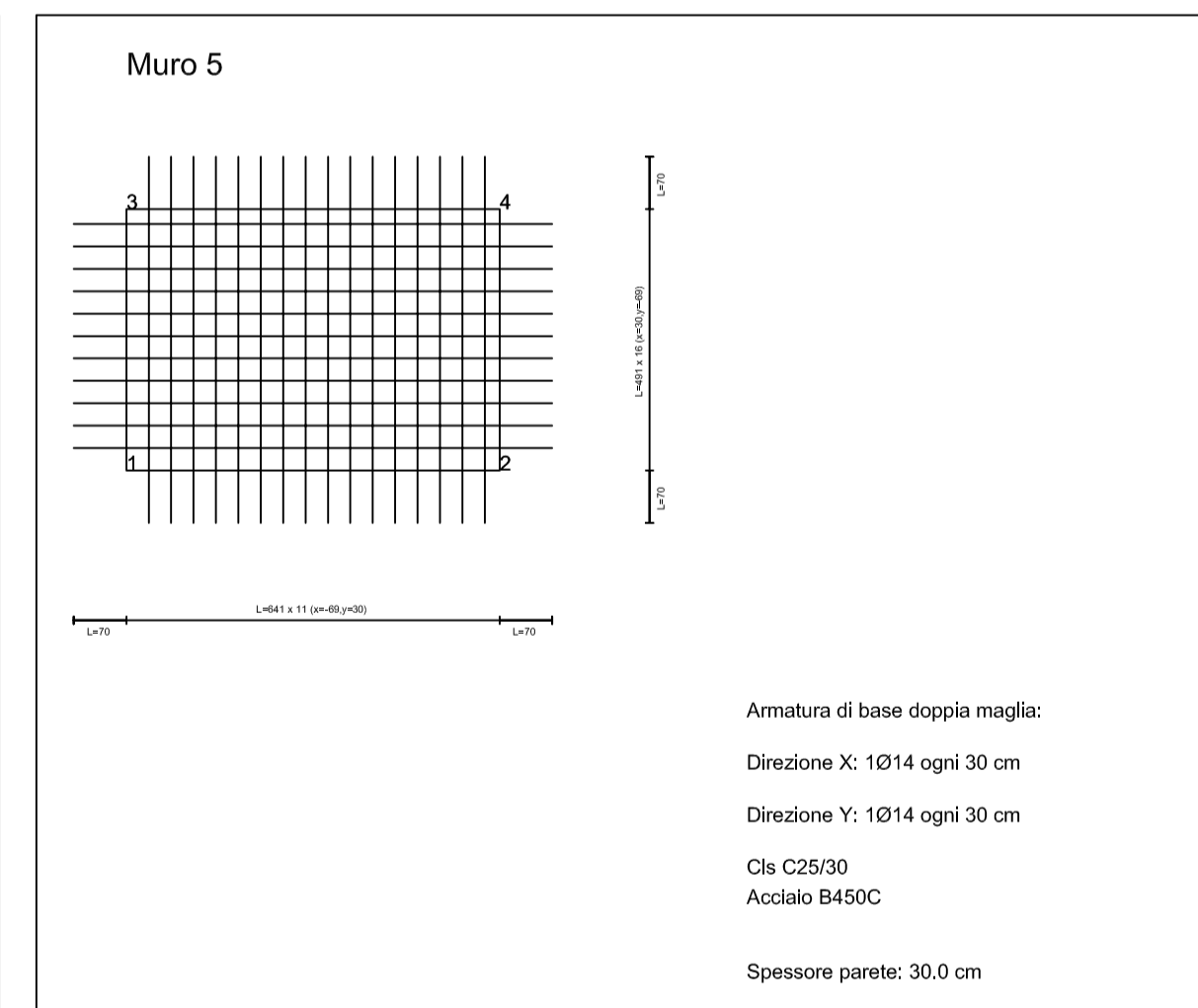
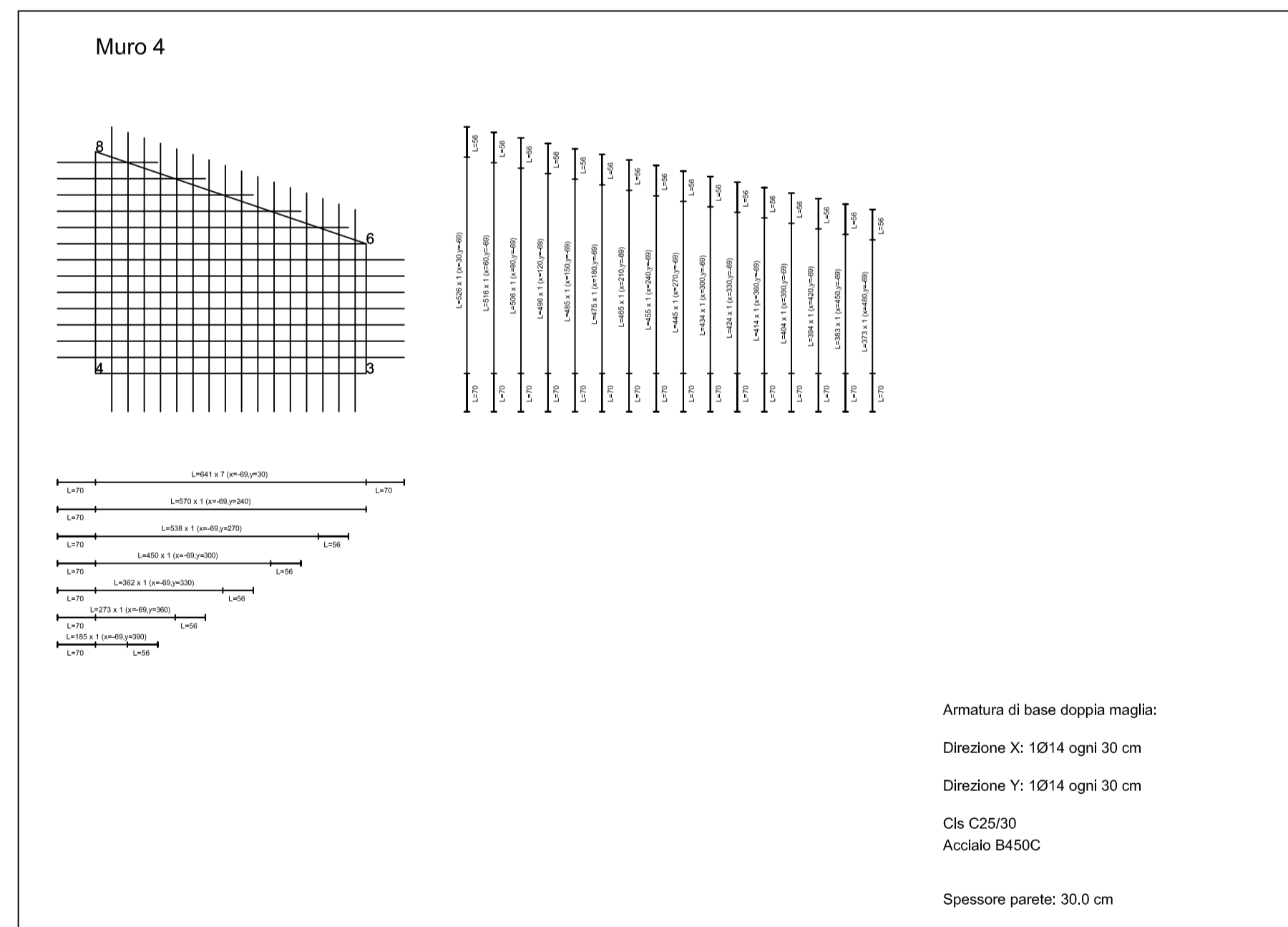
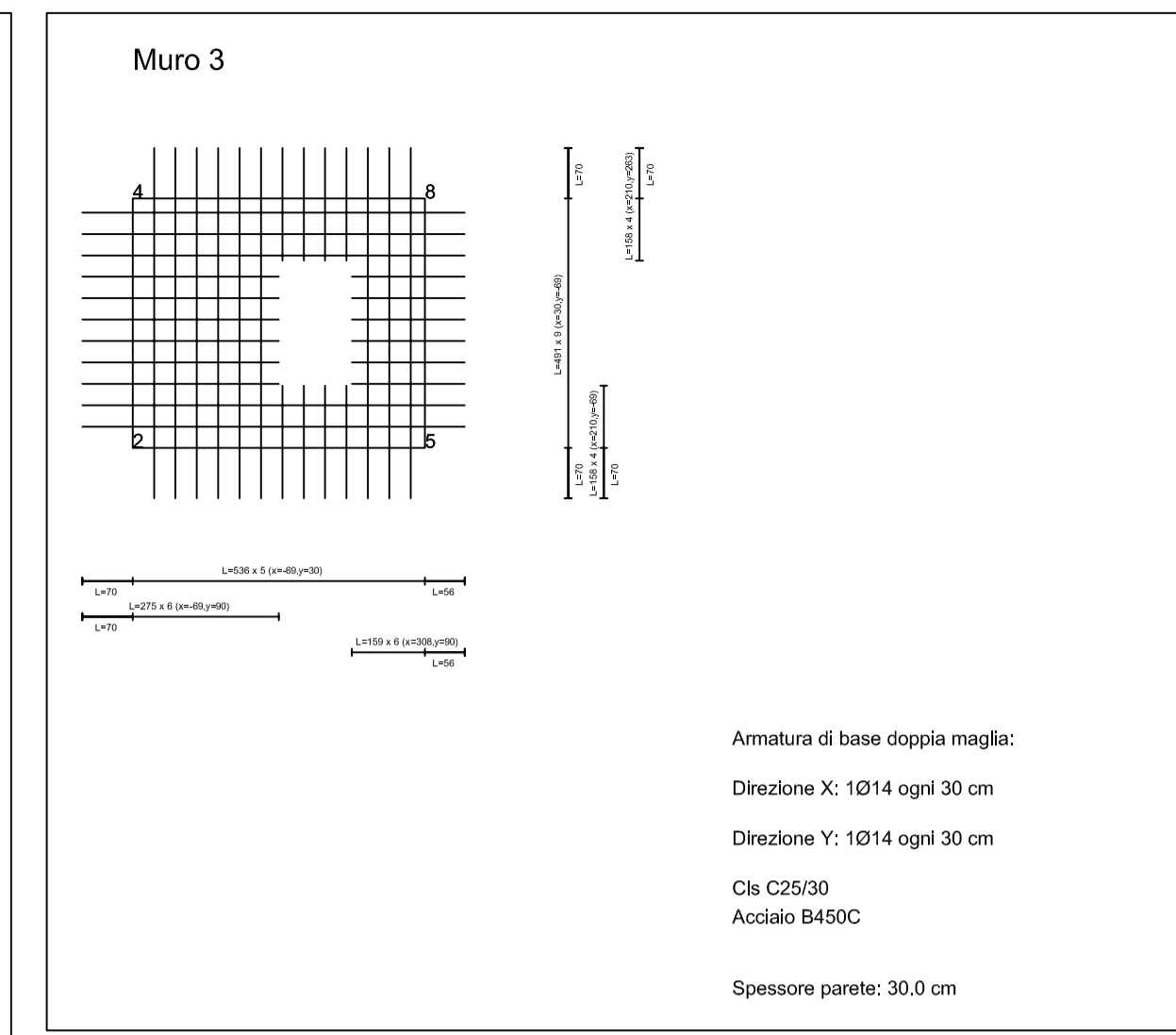
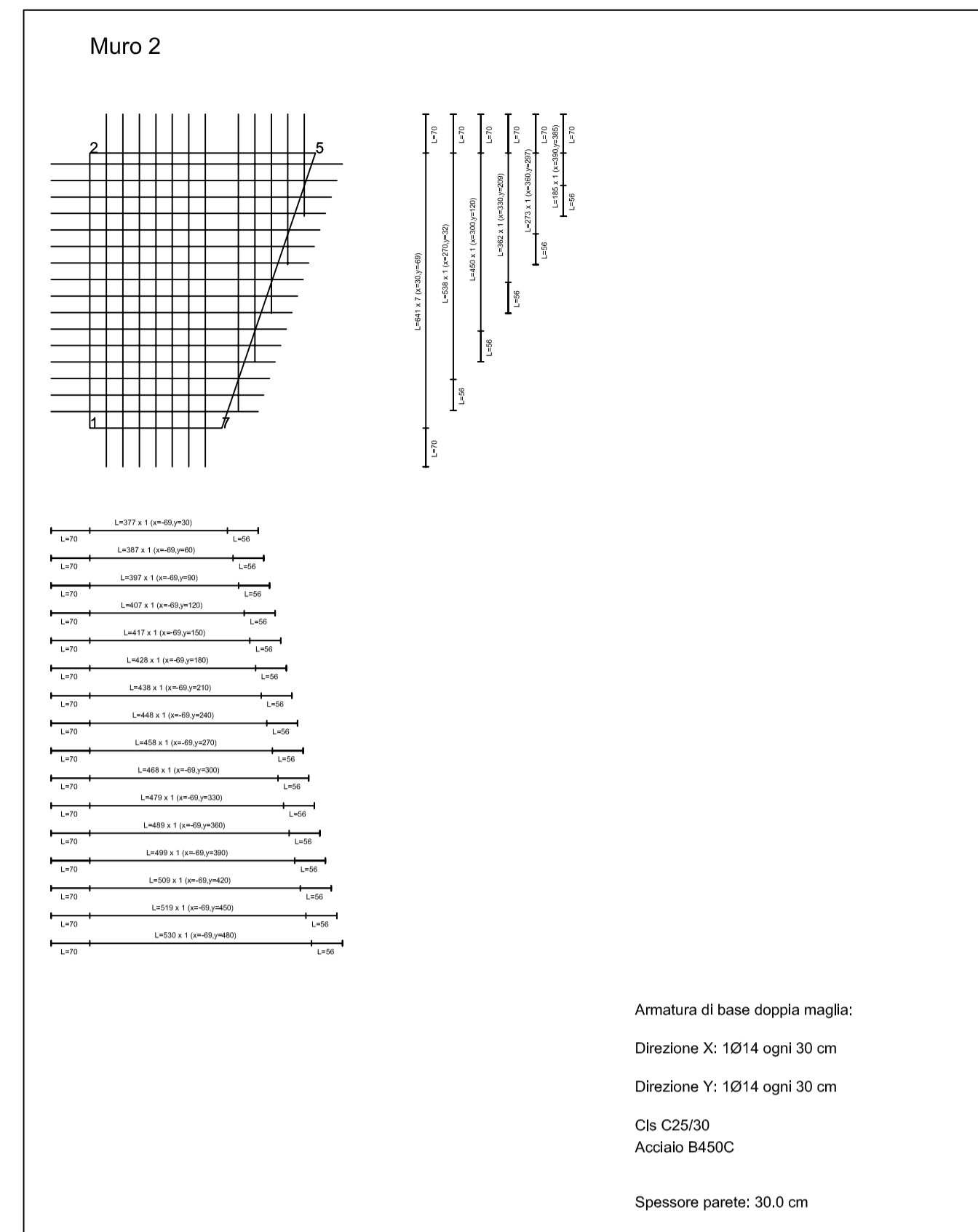
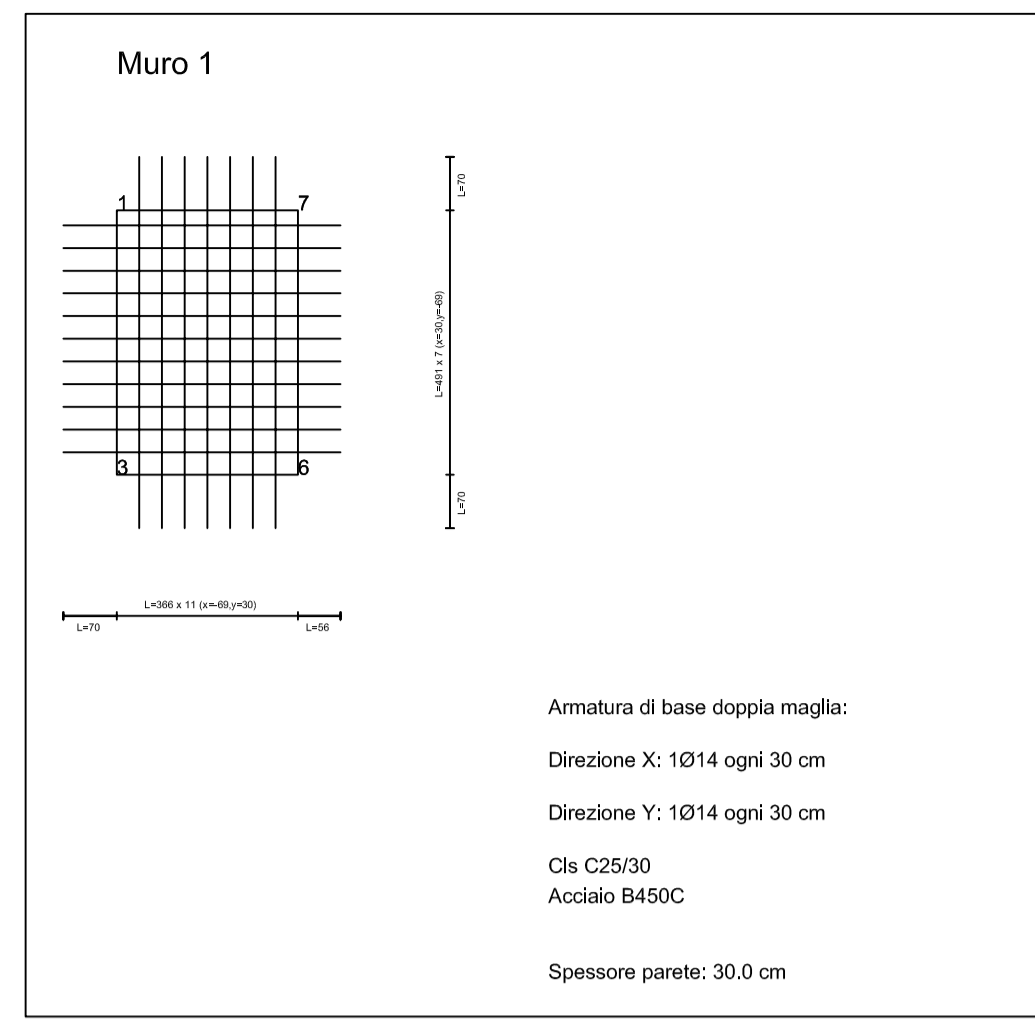


Distinta Ferri		Shell = 3-1-5-2-4	
L [cm]		ø14	
159			28
185			4
273			4
275			12
362			4
366			22
373			2
377			2
383			2
387			2
394			2
397			2
404			2
407			2
414			2
417			2
424			2
428			2
434			2
438			2
445			2
448			2
450			4
455			2
458			2
465			2
468			2
475			2
479			2
485			2
489			2
491			64
496			2
499			2
506			2
509			2
516			2
519			2
526			2
530			2
536			10
538			4
570			2
641			50

Totali			
1		ø14	
	L [m]		1219.00
	P [Kg]		1472.55

Peso complessivo del ferro [Kg]=1472.55
 Volume del calcestruzzo [mc]=21.29
 Superficie delle casseformi [mq]=108.58





CONSORZIO DI BONIFICA VULTURE ALTO BRADANO

Gaudio di Lavello (PZ)

MANUTENZIONE STRAORDINARIA DI UN IMPIANTO DI IRRIGAZIONE PER COLTURE ARBOREE IN CONTRADA MESSERO E ATTREZZAMENTI IRRIGUIO in agro di Venosa





PROGETTO ESECUTIVO

ELABORATO H1	Calcolo strutturale: Carpentaria Vasca di attingimento	SCALA 1:100
------------------------	---	----------------

Il Progettista
Arch. Elisabetta PESCUA

Il Consulente
Ing. Andrea DORIA